

What's in Your Pipeline?





Why Pick HOBAS?

It's the Best Pipe Investment You Can Make
Centrifugal Casting Is the Difference

Exactly What Are HOBAS Pipes?

HOBAS pipes are unique - centrifugally cast, fiberglass reinforced, polymer mortar (CCFRPM). They are strong, light and inherently corrosion resistant with consistent dimensions, smooth surfaces and high stiffness. Sophisticated HOBAS manufacturing means you get real value, the lowest life cycle cost in the industry for both new installations and rehabilitation.

Long-Life

HOBAS pipe is inherently corrosion resistant because of the materials that go into it. Design service life is up to 100 years and more. HOBAS meets or exceeds ASTM standards as measured in sewer pipe accelerated aging tests. Results project that HOBAS pipe will last many thousands of years, unequalled by any other pipe.




Consistent Quality for Performance You Can Count On

Most U.S. municipalities have HOBAS pipe in their systems and the use of HOBAS pipe in the USA is expanding faster than ever after more than 25 years of reliable performance. More than 13,000 kilometers of HOBAS pipe is in service around the world. The HOBAS computer controlled production process assures consistent, high quality pipes, tested to comply with applicable standards.

Smoother Surfaces, High Flow Capacity

Precision centrifugal casting produces pipes that no other method can deliver - a dense composite with mold smooth exterior surfaces and a glass-smooth liner that is nonporous, resilient and abrasion resistant. Combined with HOBAS thin-wall construction and resulting oversized I.D., you get the highest flow capacity available.



The HOBAS name on the pipe says you've chosen the leader in pipe technology: first choice for virtually every application and method of installation.



Project
Avon One Penstock Replacement
Location
Hants County, Nova Scotia
Diameter
1981.2 and 2286.0 mm
Footage
94.5 m

Leak-Free Joints

Another HOBAS advantage is push-together joints for a 100 percent leak-free pipeline that preserves the streets above and reduces treatment costs. HOBAS pipe has a consistent, mold-smooth O.D. The pipes seal perfectly to molded and precise tolerance machined couplings.

Easy Installation

Installation is quick and easy for several reasons. HOBAS high stiffness design provides predictable, reliable pipe performance by every method.

Push-together joints are simple and fast to assemble. Lightweight pipes are safe and easy to handle, often with smaller equipment typically on the site.



Sliplining: The smooth interior surface and oversized I.D. typically maintain or increase flow capacity. Low profile and flush bell-spigot joint options give you a choice of joint configurations.

Tunneling: Two-pass tunneling requires a smaller primary tunnel because of HOBAS high strength, thin-wall pipe. This reduces excavation and spoil removal. Longer insertion pushes speed installation and require fewer shafts. HOBAS pipe can navigate curves, too.

Project
**Corner Brook
Pulp and Paper**
Location
**Deer Lake,
Newfoundland**
Diameter
2794.0 mm
Footage
735.5 m



Easy To Specify, Lower Project Cost

ASTM and AWWA standards cover most applications and product tests. And we offer guide specifications to tailor for your individual project and give you the best pipe for your application.



Engineering and Customer Support

Count on HOBAS for responsive customer service and on-site field reps backed by extensive engineering support. That means continuous cooperation from spec writing stage to installation and final acceptance.



Microtunneling or Jacking: HOBAS pipe's high strength and smooth, constant O.D. permit drives of 152.4 to 304.8 m with lower force and fewer jacking stations.



Direct Bury: HOBAS is the preferred pipe for deep installations and withstands covers in excess of 24.4 m.



Above Ground: HOBAS pipe is ideal for above ground installations. UV resistance is excellent.



HOBAS Pipe Delivers Major Advantages in Every Demanding Application, Every Type of Installation.



Applications and Installation Methods

This unique, high performance pipe is used for both new installations and rehabilitation. HOBAS pipe is manufactured in diameters from 457.2 to 3200 mm and various section lengths. Other choices include multiple stiffness and pressure classes and a variety of joints and couplings. This flexibility makes HOBAS suitable for virtually every application and type of installation.

The Product

Multiple Applications

- Sewer Interceptors
- Potable Water
- Force Mains
- Outfalls
- Industrial Effluents
- Salt Water Lines
- Odor Control Piping
- Cooling Water
- Penstock

Section Lengths

Standard 1.5, 3 and 6 meter

Pressure Classes

Standard 25 (1.7 bars), 50 (3.4 bars), 100 (6.8 bars), 150 (10.2 bars), 200 (13.6 bars) and 250 (17 bars) psi

Stiffness Classes

Standard 18, 36, 46 and 72 psi plus jacking pipes

Diameters from 457 mm to 3200 mm

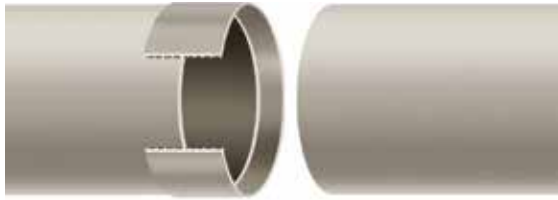
18"	457.2 mm
20"	508.0 mm
24"	609.6 mm
27"	685.8 mm
28"	711.2 mm
30"	762.0 mm
33"	838.2 mm
36"	914.4 mm
41"	1041.4 mm
42"	1066.8 mm
44"	1117.6 mm
45"	1143.0 mm
48"	1219.2 mm
51"	1295.4 mm
54"	1371.6 mm
57"	1447.8 mm
60"	1524.0 mm
63"	1600.2 mm
66"	1676.4 mm
69"	1752.6 mm
72"	1828.8 mm
78"	1981.2 mm
84"	2133.6 mm
85"	2159.0 mm
90"	2286.0 mm
96"	2438.4 mm
104"	2641.6 mm
110"	2794.0 mm
120"	3048.0 mm
126"	3200.4 mm

Project
WESS W-12
Location
**Edmonton,
Alberta**
Diameter
**762.0, 914.4, 1219.2
and 1676.4 mm**
Footage
199.3 m



Joints

FWC Coupling



Low Profile Bell-Spigot



Flush Bell-Spigot



Joint Type

Applications

FWC Coupling	Direct Bury, Aboveground, Tunnel and Casing Carrier (up to 250 psi)
Low Profile Bell-Spigot	Gravity Flow Sliplining
Pressure Relining	Pressure Sliplining
Flush Bell-Spigot	Gravity Flow Direct Jacking, Sliplining and Tunnel Carrier
Flush FWC Coupling	Pressure Jacking

Fittings

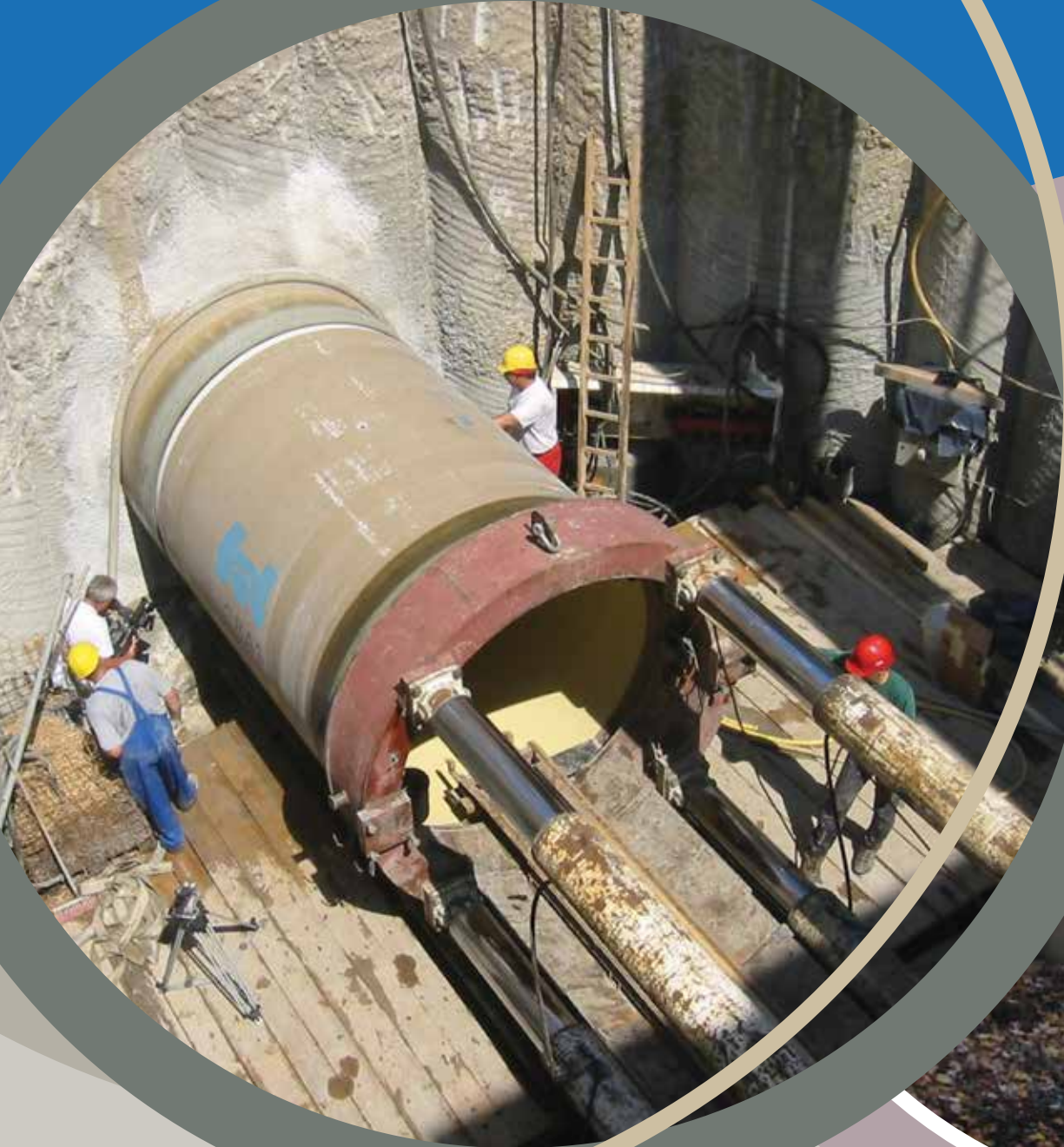
- Elbows
- Tees
- Reducers
- Laterals
- Flanges
- Nozzles
- Wyes
- Manholes

Standard Specifications

- ASTM D3262 Non-pressure Sanitary Sewers
- ASTM D3754 Sewer Force Mains and Industrial Effluents
- AWWA C950 Pressure Water Systems
- AWWA M45 Fiberglass Pipe Design Manual
- ISO 10467 and ISO 10639
- BNQ GRP formulation for potable water pipe

Project
Turcot Interchange
 Location
Montreal, Quebec
 Diameter
2794 mm
 Footage
609.6 m





HOBAS Pipe USA
1413 E. Richey Road
Houston, Texas 77073
Tel: (281) 821-2200
www.hobaspipe.com